



SolarNoah Pro

Anti-hotspot Topcon Flexible Module



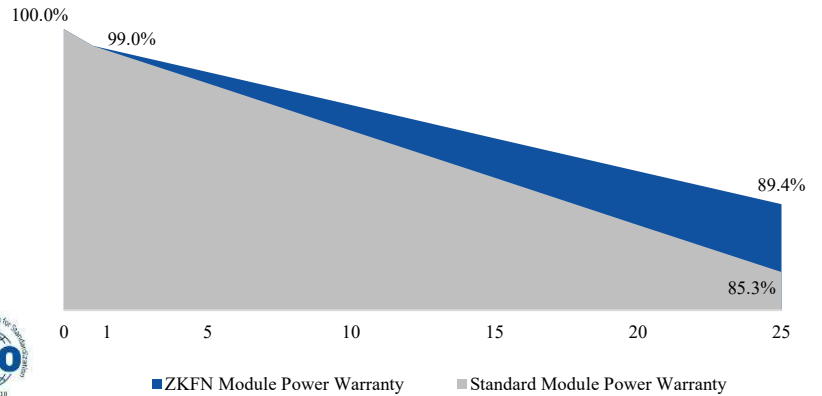
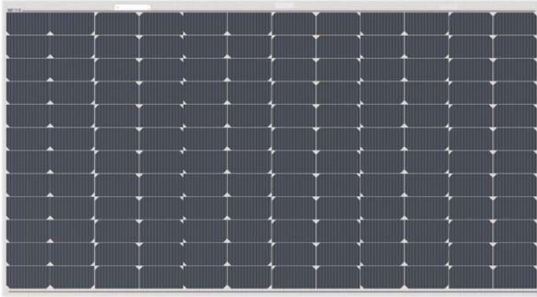
Module Type: ZKFN B1 012B-XXX Peak-power: 550W-560W

560W	21%	0~+5W
Max-power	Efficiency	Power-tolerance

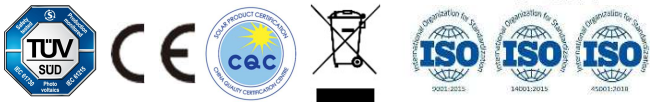
Reinsurance Coverage For 25 Years Insured By China RE

12 years
Quality
Warranty

25 years
Performance
Warranty



Quality Assurance



※ 1st year degradation less than 1%, 25 years power output 89.4% guaranteed.

Shadow Shading Resistance



Hot Spot Prevention

Over 30% Lower Temperature Than Conventional Modules In Shading Tests

Low-weight Thin Flexible

3.8 kg/m², less than 30% of traditional glass-based solar modules

1.8 mm (junction box not included), only 50% of traditional glass-based solar modules

Anti-vibration, no cell cracks and no power losses after high-frequency vibration

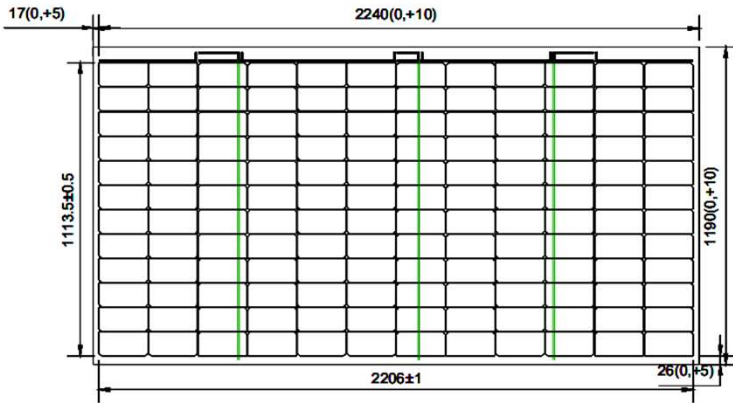
High-strength Easy-to-install Aesthetics

World's only c-si flexible module which can endure hail strike without cell cracks and power losses

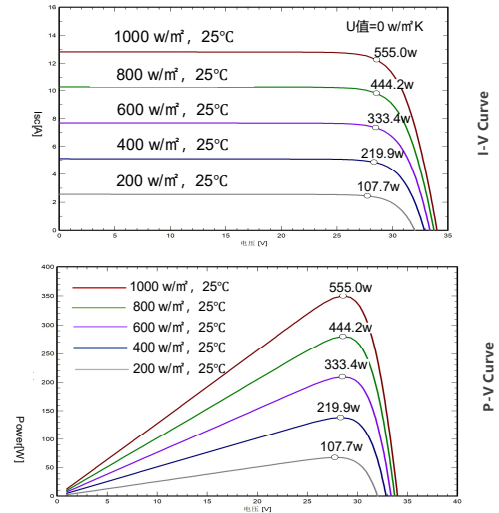
No need for PV support bracket, modules can be directly bonded to installation surface by quick-clamp

Module's surface and texture can be customized to meet aesthetic requirements

Size (mm)



Curve characteristic diagram (555Wp)



Electrical performance parameters (STC^{*})

Module Type		ZKFN B1 012B-550	ZKFN B1 012B-555	ZKFN B1 012B-560
Max-power	PMPP [W]	550	555	560
Power Tolerance	[W]	0-5		
Max-power Voltage	VMPP [V]	45.19	45.25	45.29
Max-power Current	IMPP [A]	12.18	12.27	12.37
Open-circuit Voltage	Voc [V]	52.96	53.01	53.05
Short-circuit Current	Isc [A]	12.95	12.92	12.96
Max. Series Fuse Rating	[A]	25		
Max. System Voltage	IEC/UL [V]	1500V DC(IEC)		

STC^{*}: Irradiance=1000W/m², Module temperature=25°C, AM=1.5, test error ±3%

Electrical performance parameters (NMOT^{*})

Module Type		ZKFN B1 012B-550	ZKFN B1 012B-555	ZKFN B1 012B-560
Max-power	PMPP [W]	414.15	417.92	421.68
Max-power Voltage	VMPP [V]	42.34	42.40	42.44
Max-power Current	IMPP [A]	9.79	9.87	9.95
Open-circuit Voltage	Voc [V]	50.31	50.36	50.40
Short-circuit Current	Isc [A]	10.40	10.43	10.46

NMOT^{*}: Irradiance=800W/m², Ambient temperature=20°C, Wind speed=1 m/s

Temperature coefficient

Temperature-coefficient of PMPP	[%/°C]	-0.29
Temperature-coefficient of Voc	[%/°C]	-0.26
Temperature-coefficient of Isc	[%/°C]	+0.045
NOCT	[°C]	45±2

Mechanical parameters

Cell Type	Topcon 182.2*91.87mm
Size	2250*1200mm*25mm
Thickness	1.8mm (junction box not included)/25mm(include back)
Weight	10.2 kg/module (include back)
Back Frame Type	Thickness 20mm, composite material
Output Line	4mm ² , wire length 400mm (customizable)
Connector	MC4 (Stäubli EVO 2) (back-mounted junction box)
Junction-box	Triad junction box IP68
Backboard Color	White

Application parameters

Max. System Voltage	DC 1500V
Power Tolerance	0 ~ +5 W
Operating Temperature Range	-40 °C ~ +85°C
Max. Series Fuse Rating	25 A
Mechanical Load	Front 5400Pa, back 2400Pa
Wind Resistance Class	Lv.17
Hailstone Test	25mm hailstone at the speed of 23m/s

Package

Transportation	Container size	Quantity (pcs)	Quantity (per pallet)
Container	40' HQ	1260	44
Platform Trailer	13m	1400	44
Platform Trailer	17.5m	1960	44