



中科富能
ZKFN SOLAR

SolarNoah Pro-轻质晶硅组件

组件型号: ZKFN B1 012B 组件功率: 550W-560W



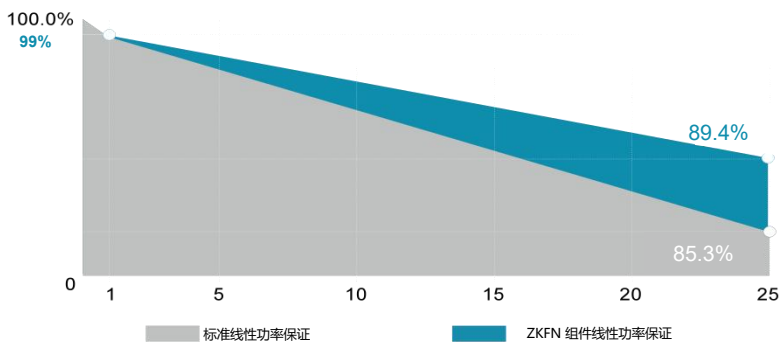
560W	22.7%	0~+5W
最大输出功率	转换效率	功率公差



功率质保25年



中国大地财产保险承保



※首年衰减小于1%，25年功率输出不低于89.4%。

产品及体系认证



轻

组件重量2.9 kg/m²，含背框重量 3.8 kg/m²



薄

组件厚度1.8 mm (不含接线盒)
含背框厚度 25 mm



强

业界首款冰雹冲击无隐裂，功率零衰减柔性晶硅组件



美

表面颜色和图案可定制化，满足建筑美学要求



易安装

夹具快速安装，更加安全可靠

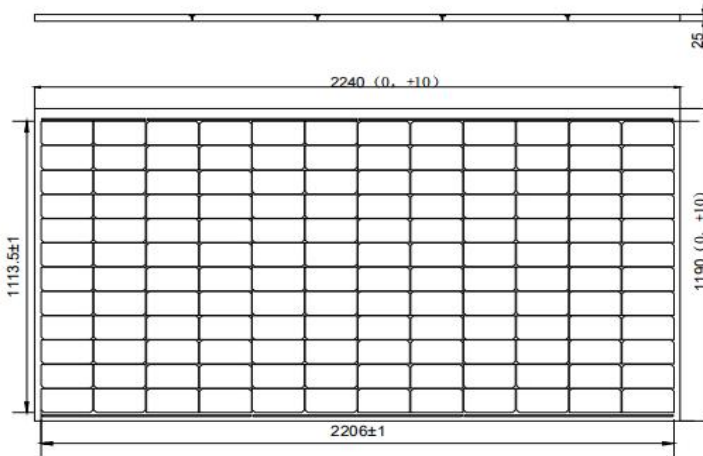


可拆卸

无损拆卸，屋面翻新无影响。



组件尺寸(mm)



电性能参数(STC*)

组件型号		ZKFN B1 012B-550	ZKFN B1 012B-555	ZKFN B1 012B-560
峰值功率	PMPP [W]	550	555	560
功率公差	[W]	0-5w	0-5w	0-5w
峰值电压	VMPP [V]	45.19	45.25	45.29
峰值电流	IMPP [A]	12.18	12.27	12.37
开路电压	Voc [V]	52.96	53.01	53.05
短路电流	Isc [A]	12.95	12.92	12.96
最大保险丝额定电流	[A]		25	
最大系统电压	IEC/UL [V]		1500V DC(IEC)	

STC * (标准测试条件):辐照度=1000W/m²,电池温度=25°C,AM=1.5, 测试误差±3%

电性能参数 (NMOT*)

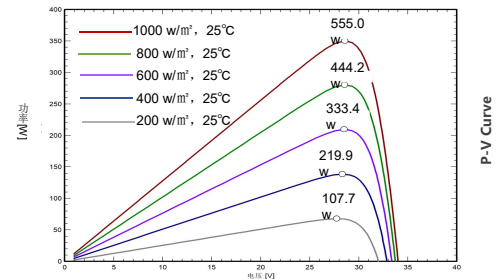
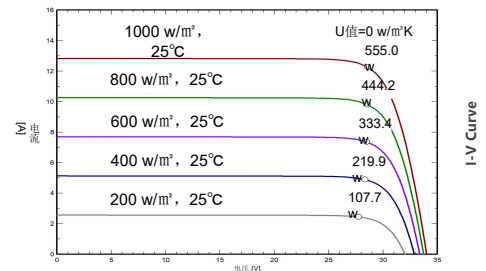
组件型号		ZKFN B1 012B-550	ZKFN B1 012B-555	ZKFN B1 012B-560
峰值功率	PMPP [W]	414.15	417.92	421.68
峰值电压	VMPP [V]	42.34	42.40	42.44
峰值电流	IMPP [A]	9.79	9.87	9.95
开路电压	Voc [V]	50.31	50.36	50.40
短路电流	Isc [A]	10.40	10.43	10.46

NMOT * (组件标称工作温度条件):辐照度=800W/m²,环境温度=20°C,AM=1.5, 风速=1m/s

温度系数

温度系数 (PMPP)	[%/°C]	-0.29
温度系数 (Voc)	[%/°C]	-0.26
温度系数 (Isc)	[%/°C]	+0.045
标称工作温度NOCT	°C	45±2°C

曲线特性图(555Wp)



机械参数

电池规格	Topcon电池 182.2mm*183.75mm
组件尺寸	2240*1190mm
组件厚度	1.8mm (不含接线盒) /25mm (含背框)
重量	10.2 kg/片 (含背框重量)
背框型号	厚度 20 mm 复合材料
输出线	4mm ² , 导线长度370mm (可按照客户需求订制)
连接器	MC4兼容(背接接线盒)
接线盒	IP68
背板颜色	白色

应用参数

最大系统电压	DC1500V
功率公差	0~+5W
工作温度	-40°C~+85°C
最大保险丝额定电流	25A
静态载荷	正面载荷5400Pa, 背面载荷2400Pa
抗风等级	17级

包装信息

运输方式	货柜大小	数量 (箱)	每箱数量 (片)
单拖	40HQ	18	44
平板拖车	13米	20	44
平板拖车	17.5米	28	44



中科富能
ZKFN SOLAR

SolarNoah Pro

Topcon Flexible Module

Module type: ZKFN B1 012B Peak-power: 550W-560W

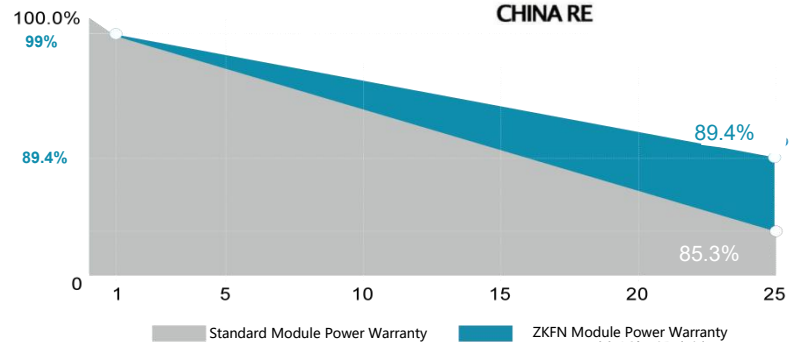
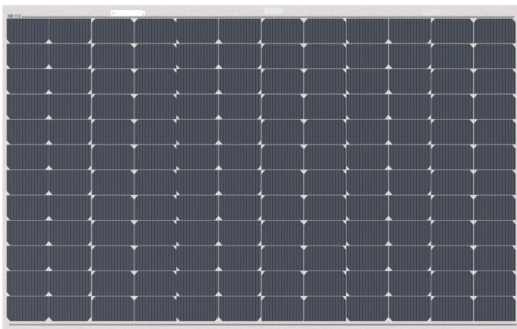


560W	22.7%	0~+5W
Max-Power	Efficiency	Power-tolerance

Reinsurance Coverage for 25 Years



Insured by China RE



Quality Assurance



※1st year degradation less than 1%, 25 years power output 89.4% guaranteed.



Low-weight

Module weight 2.9kg /m², including back frame weight 3.8 kg /m²



Thin

Module thickness 1.8mm (without junction box) Including back frame thickness 25mm



High-strength

World's only C-Si flexible module which can endure hail- strike without cell cracks and power losses



Aesthetics

Module's surface and texture can be customized to meet aesthetic requirements



Easy-to-install

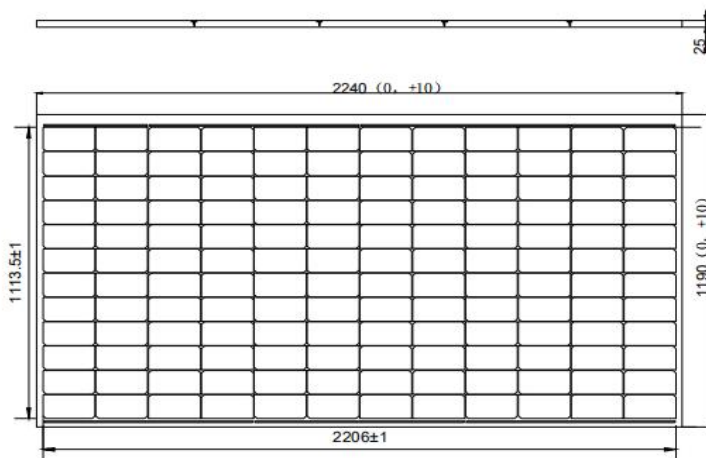
Fixture quick installation, rapid installation with tools, safer and more reliable



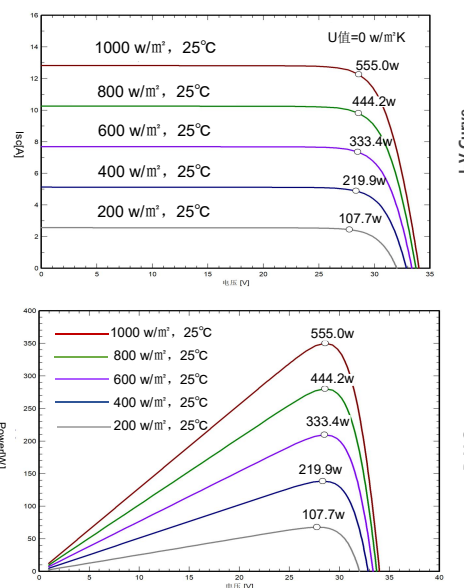
Detachable

Non-destructive, no impact on roof renovation

Size (mm)



Curve characteristic diagram (555Wp)



Electrical performance parameters (STC*)

Module Type	ZKFN B1 012B-550	ZKFN B1 012B-555	ZKFN B1 012B-560	
Max-Power	PMPP [W]	550	555	560
Power Tolerance	[W]	0-5w	0-5w	0-5w
Max-Power Voltage	VMPP [V]	45.19	45.25	45.29
Max-Power Current	IMPP [A]	12.18	12.27	12.37
Open-Circuit Voltage	Voc [V]	52.96	53.01	53.05
Short-Circuit Current	Isc [A]	12.95	12.92	12.96
Max. series fuse rating	[A]		25	
Max. system voltage	IEC/UL [V]	1500V DC(IEC)		

STC*: Irradiance=1000 W/m², Module temperature=25°C, AM=1.5, test error ±3%

Electrical performance parameters (NMOT*)

Module Type	ZKFN B1 012B-550	ZKFN B1 012B-555	ZKFN B1 012B-560	
Max-Power	PMPP [W]	414.15	417.92	421.68
Max-Power Voltage	VMPP [V]	42.34	42.40	42.44
Max-Power Current	IMPP [A]	9.79	9.87	9.95
Open-Circuit Voltage	Voc [V]	50.31	50.36	50.40
Short-Circuit Current	Isc [A]	10.40	10.43	10.46

NMOT*: Irradiance=800 W/m², Ambient temperature=20°C, Wind speed=1 m/s

Temperature coefficient

Temperature-coefficient of PMPP	[%/°C]	-0.29
Temperature-coefficient of Voc	[%/°C]	-0.26
Temperature-coefficient of Isc	[%/°C]	+0.045
NOCT	°C	45±2°C

Mechanical parameters

Cell Type	Topcon 182.2mm*183.75mm
Size	2240*1190mm
Thickness	1.8mm (junction box not included)/25mm(include back)
Weight	10.2 kg/module (include back)
Back frame type	Thickness 20mm, composite material
Output line	4mm ² , wire length 370mm (can be customized according to customer demand)
Connector	MC4 Compatible (back-mounted junction box)
Junction-box	Triad Junction box IP68
Backboard color	White

Application parameters

Max. system voltage	DC 1500V
Power Tolerance	0 ~ +5 W
Operating temperature range	-40 °C ~ +85°C
Max. series fuse rating	25 A
Mechanical Load	Front 5400Pa, Back 2400Pa
Wind resistance class	Lv.17

Package

Transportation	Container size	Quantity (Box)	Quantity per carton(pcs)
Container	40' HQ	18	44
Platform Trailer	13m	20	44
Platform Trailer	17.5m	28	44



中科富能
ZKFN SOLAR

山东中科富能光电科技有限公司

SHANDONG ZKFN SOLAR TECHNOLOGY CO.,LTD.

Tel.: 0086 400 6768 100 / 00866 199 0537 7053 Web.: www.zkfn.com

Add.: Factory 1 of XinShenglin, LvHaiHui Intelligent Manufacturing Industrial Park, Jining Economic Development Zone, Jining, Shandong, China

