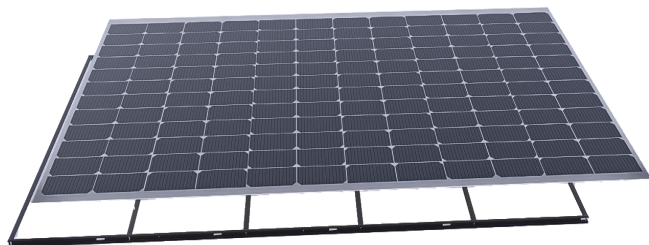




中科富能
ZKFN SOLAR

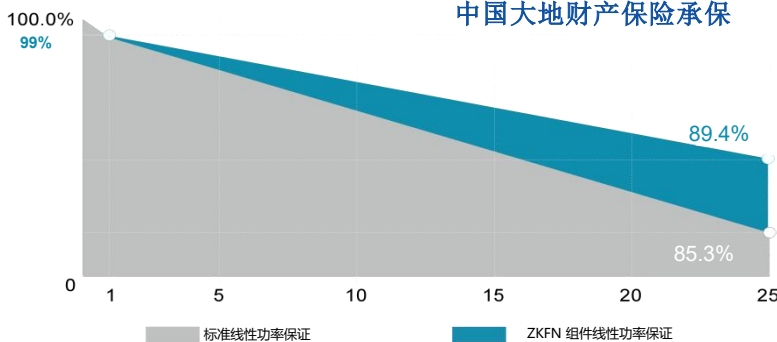
SolarNoah Pro 轻质晶硅组件

组件型号: ZKFN B1 012B 组件功率: 550W-560W



560W	22.7%	0~+5W
最大输出功率	转换效率	功率公差

功率质保25年



产品及体系认证



ISO三体系认证

※首年衰减小于1%，25年功率输出不低于89.4%。

抗阴影遮挡



防高温热斑

同比常规组件遮挡测试，温度降低超过30%

轻薄柔



重量2.9 kg/m²，低于传统玻璃组件重量的30%
厚度1.8mm（不含接线盒），是传统组件厚度的50%
最小弯曲半径可达0.3m，电池无隐裂，功率无衰减

强易美



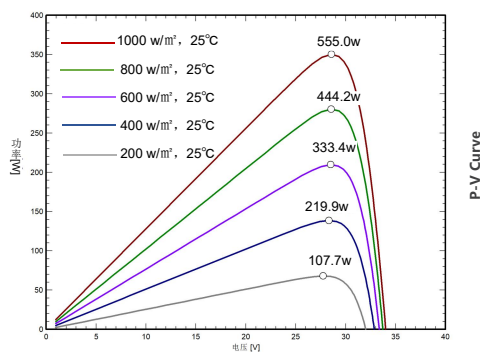
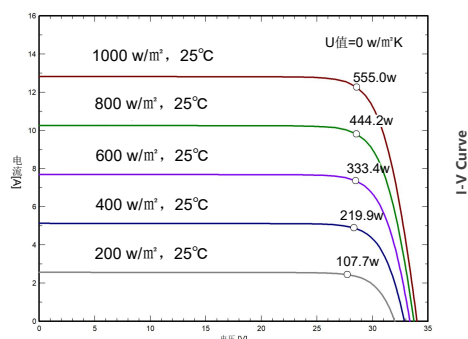
业界首款冰雹冲击无隐裂，功率零衰减柔性晶硅组件
系统无需支架，原装面直接粘贴，结构胶快速安装
表面颜色和图案可定制化，满足建筑美学要求



组件尺寸(mm)



曲线特性图(例: 555Wp)



电性能参数(STC*)

组件型号		ZKFN B1 012B-550	ZKFN B1 012B-555	ZKFN B1 012B-560
峰值功率	PMPP [W]	550	555	560
功率公差	[W]	0-5w	0-5w	0-5w
峰值电压	VMPP [V]	45.19	45.25	45.29
峰值电流	IMPP [A]	12.18	12.27	12.37
开路电压	Voc [V]	52.96	53.01	53.05
短路电流	Isc [A]	12.95	12.92	12.96
最大保险丝额定电流	[A]		25	
最大系统电压	IEC/UL [V]		1500V DC(IEC)	

STC * (标准测试条件):辐照度=1000W/m²,电池温度=25°C,AM=1.5, 测试误差±3%

电性能参数 (NMOT*)

组件型号		ZKFN B1 012B-550	ZKFN B1 012B-555	ZKFN B1 012B-560
峰值功率	PMPP [W]	414.15	417.92	421.68
峰值电压	VMPP [V]	42.34	42.40	42.44
峰值电流	IMPP [A]	9.79	9.87	9.95
开路电压	Voc [V]	50.31	50.36	50.40
短路电流	Isc [A]	10.40	10.43	10.46

NMOT * (组件标称工作温度条件):辐照度=800W/m²,环境温度=20°C,AM=1.5, 风速=1m/s

温度系数

温度系数 (PMPP)	[%/°C]	-0.29
温度系数 (Voc)	[%/°C]	-0.26
温度系数 (Isc)	[%/°C]	+0.045
标称工作温度NOCT	°C	45±2°C

机械参数

电池规格	Topcon电池 182.2mm*183.75mm
组件尺寸	2240*1190*25mm
组件厚度	25mm (含背框)
组件重量	10.2kg/片 (含背框重量)
输出线	4mm², 导线长度400mm (可按照客户需求订制)
连接器	MC4兼容
接线盒	IP68
背板颜色	黑色/白色

应用参数

最大系统电压	DC1500V
功率公差	0~+5W
工作温度	-40°C~+85°C
最大保险丝额定电流	25A
静态载荷	正面5400Pa, 背面2400Pa

包装信息

运输方式	货柜大小	数量 (片)	数量 (每托)
货柜	40HQ	1260	44
平板拖车	13米	1400	44
平板拖车	17.5米	1960	44



中科富能
ZKFN SOLAR

SolarNoah Pro

Topcon Flexible Module

Module type: ZKFN B1 012B Peak-power: 550W-560W

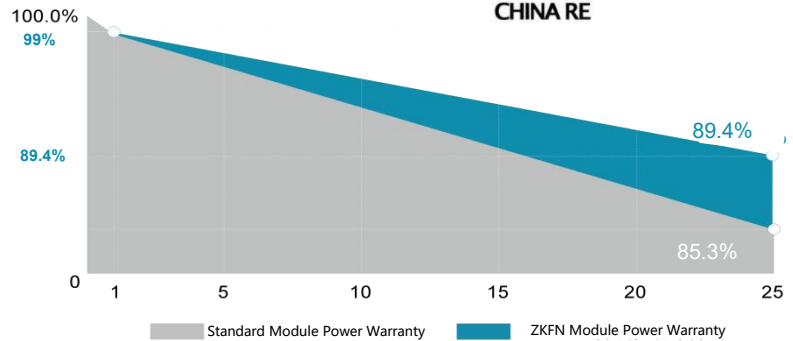
560W	22.7%	0~+5W
Max-Power	Efficiency	Power-tolerance



Reinsurance Coverage for 25 Years



Insured by China RE



※1st year degradation less than 1%, 25 years power output 89.4% guaranteed.

Quality Assurance



Shadow Shading Resistance



Hot Spot Prevention

Over 30% Lower Temperature Than Conventional Modules in Shading Tests

Low-weight Thin Flexible



2.9 kg/m², Less than 30% of traditional glass-based solar modules

1.8 mm (junction box not included), Only 50% of traditional glass-based solar modules

Smallest bending radius of 0.3 m, No cell cracks and no power losses

High-strength Easy-to-install Aesthetics

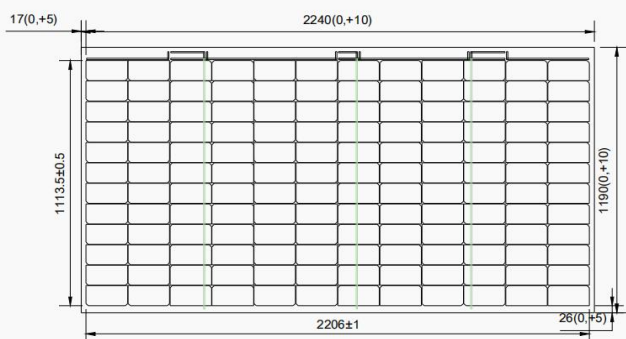


World's only C-Si flexible module which can endure hail-strike without cell cracks and power losses

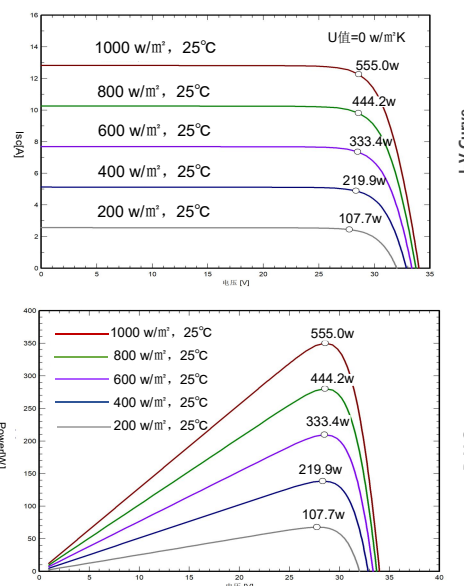
No need for PV support bracket, modules can be directly bonded to installation surface by weather-resistant glue

Module's surface and texture can be customized to meet aesthetic requirements

Size (mm)



Curve characteristic diagram (555Wp)



Electrical performance parameters (STC*)

Module Type		ZKFN B1 012B-550	ZKFN B1 012B-555	ZKFN B1 012B-560
Max-Power	PMPP [W]	550	555	560
Power Tolerance	[W]	0-5w	0-5w	0-5w
Max-Power Voltage	VMPP [V]	45.19	45.25	45.29
Max-Power Current	IMPP [A]	12.18	12.27	12.37
Open-Circuit Voltage	Voc [V]	52.96	53.01	53.05
Short-Circuit Current	Isc [A]	12.95	12.92	12.96
Max. series fuse rating	[A]		25	
Max. system voltage	IEC/UL [V]	1500V DC(IEC)		

STC*: Irradiance=1000 W/m², Module temperature=25°C, AM=1.5, test error ±3%

Electrical performance parameters (NMOT*)

Module Type		ZKFN B1 012B-550	ZKFN B1 012B-555	ZKFN B1 012B-560
Max-Power	PMPP [W]	414.15	417.92	421.68
Max-Power Voltage	VMPP [V]	42.34	42.40	42.44
Max-Power Current	IMPP [A]	9.79	9.87	9.95
Open-Circuit Voltage	Voc [V]	50.31	50.36	50.40
Short-Circuit Current	Isc [A]	10.40	10.43	10.46

NMOT*: Irradiance=800 W/m², Ambient temperature=20°C, Wind speed=1 m/s

Temperature coefficient

Temperature-coefficient of PMPP	[%/°C]	-0.29
Temperature-coefficient of Voc	[%/°C]	-0.26
Temperature-coefficient of Isc	[%/°C]	+0.045
NOCT	°C	45±2°C

Mechanical parameters

Cell Type	Topcon 182.2mm*183.75mm
Size	2240*1190*25mm
Thickness	25mm(include back)
Weight	10.2 kg/module (include back)
Connector	MC4 Compatible
Junction-box	Triad Junction box IP68
Backboard color	White

Application parameters

Max. system voltage	DC 1500V
Power Tolerance	0 ~ +5 W
Operating temperature range	-40 °C ~ +85°C
Max. series fuse rating	25 A
Mechanical Load	Front 5400Pa, Back 2400Pa

Package

Transportation	Container size	Quantity (pcs)	Quantity (per pallet)
Container	40' HQ	1260	44
Platform Trailer	13m	1400	44
Platform Trailer	17.5m	1960	44



中科富能
ZKFN SOLAR

山东中科富能光电科技有限公司

SHANDONG ZKFN SOLAR TECHNOLOGY CO.,LTD.

Tel.: 0086 400 6768 100 / 00866 199 0537 7053 Web.: www.zkfn.com

Add.: Factory 1 of XinShenglin, LvHaiHui Intelligent Manufacturing Industrial Park, Jining Economic Development Zone, Jining, Shandong, China

